

User's Manual

USB 3.0 PCI Express Card

ABOUT THIS MANUAL

This manual is designed for use with the USB 3.0 PCI Express Card. Information in this document has been carefully checked for accuracy; however, no guarantee is given to the correctness of the contents. The information in this document is subject to change without notice. The manufacturer does not make any representations or warranties (implied or otherwise) regarding the accuracy and completeness of this document and shall in no event be liable for any loss of profit or any commercial damage, including but not limited to special, incidental, consequential, or other damage.

SAFETY INSTRUCTIONS

Always read the safety instructions carefully:

Keep this User's Manual for future reference.

Keep this equipment away from humidity.

If any of the following situations arises, get the equipment checked by a service technician:

The equipment has been exposed to moisture.

The equipment has been dropped and damaged.

The equipment has obvious sign of breakage.

The equipment has not been working well or you cannot get it to work according to the User's Manual.

COPYRIGHT

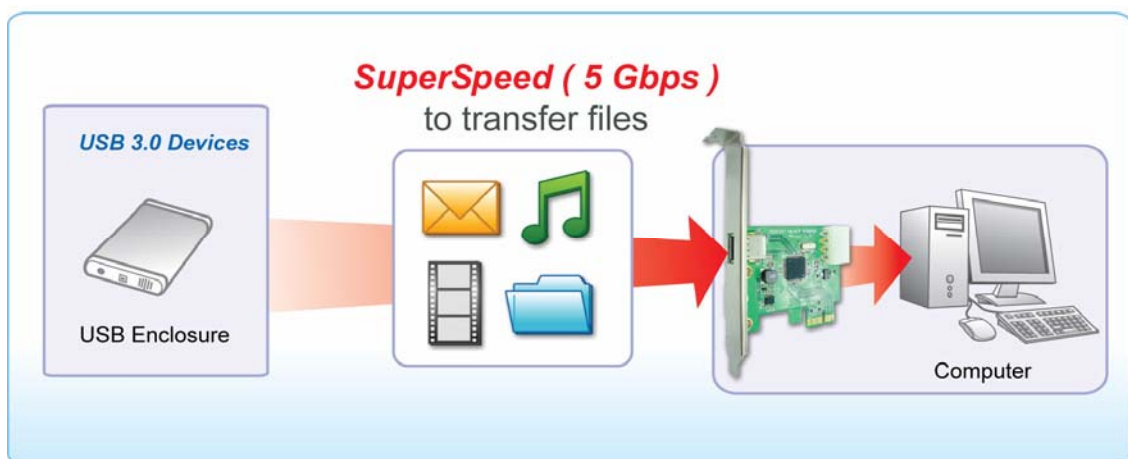
This document contains proprietary information protected by copyright. All right are reserved. No part of this manual may be reproduced by any mechanical, electronic or other means, in any form, without prior written permission of the manufacturer.

Table of Contents

1. Introduction	3
Features.....	4
Package Contents	4
System Requirements.....	4
2. Installation	5
Hardware Installation	5
Driver Installation	6
3. Installation Verification	10
4. Uninstall the Driver.....	12
5. Specifications	14
6. Regulatory Compliance	15
FCC Conditions	15
CE.....	15
WEEE Information	15

1. Introduction

This new product mainly is to fit in the market demand and it can be installed easily into any PCI Express slot. Therefore, it can be easily and flexibly using on any host device with PCI Express slot. It will also bring cost saving to fulfill the user's single USB 3.0 port demand. Besides, it can easily plug-n-Play, thus it will be very user friendly and time saving during the installation. Additional advantageous is will bring higher efficiency and advantageous to user with integrating Super Speed USB transceiver as well as PCI Express transceiver as well as fully backwards compatible with USB 2.0/1.1



Features

- ◆ Compliant with USB 3.0 Specification Revision 1.0
- ◆ Compliant with Extensible Host controller interface (xHCI) Specification Revision 0.96
- ◆ Fully backwards compatible with USB 2.0/1.1
- ◆ Single USB port supporting SS/HS/FS/LS data rates (5 Gbps/480M bps/12M bps/1.5M bps)
- ◆ Single PCI Express Lane
- ◆ Supports PCI Express Specification Revision 1.1
- ◆ Supports PCI Express Card Revision 1.0
- ◆ Supports PCI bus Power Management Interface Specification Revision 1.2
- ◆ 10 MHz/30 MHz crystal system clock
- ◆ Integrated Super Speed USB Transceiver
- ◆ Integrated PCI Express Transceiver

Package Contents

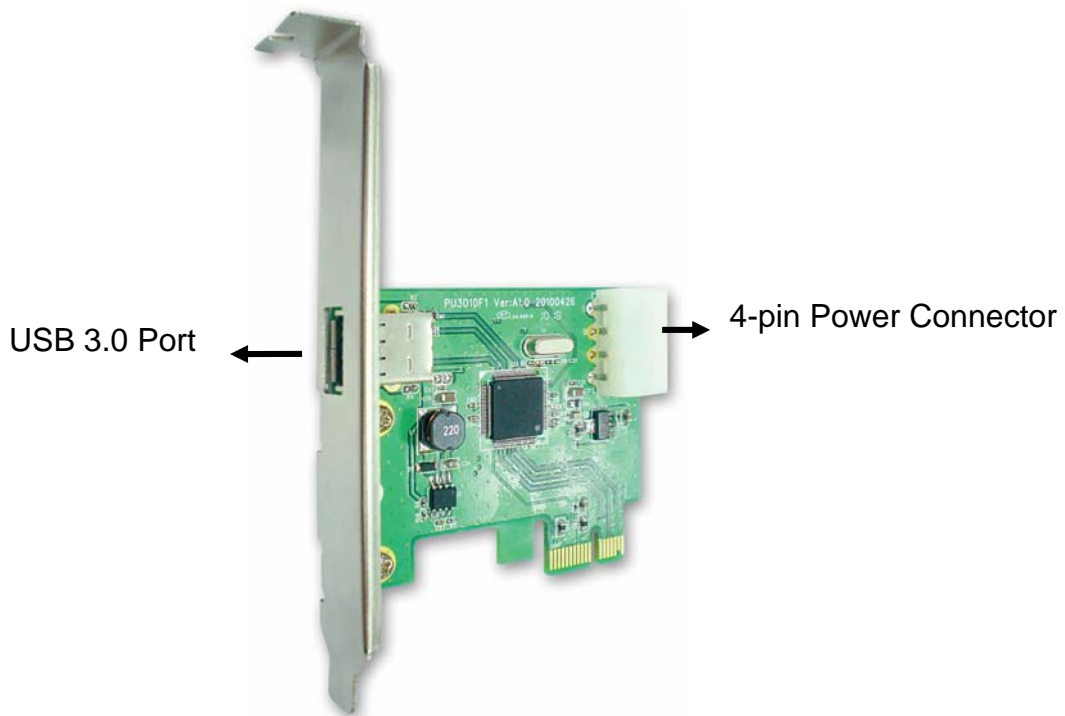
- | | |
|--|----|
| ◆ USB 3.0 PCI Express Card | x1 |
| ◆ Driver CD (Driver and User's Manual) | x1 |
| ◆ Quick Installation Guide | x1 |

System Requirements

- ◆ OS Compliance: Windows[®] 7, Windows Vista[®], Windows[®] XP, Linux

2. Installation

A. Hardware Installation



1. Turn your computer off and any peripherals connected to the computer. Unplug the power cable before installing the host card.
2. Remove the cover from the computer case.
3. Locate an available PCI Express slot and remove the bracket cover.
4. Insert the card into the open PCI Express slot and fasten the bracket to the rear of the case.
5. Connect 4P power cable from the computer's power supply to the card.
6. Place the cover back onto the computer.
7. Insert the power cable into the socket on the power supply.

B. Driver Installation

On Windows® XP, Windows Vista®, Windows® 7

1. When “**Found New Hardware Wizard**” Window appears, please click “**Cancel**”.



2. Insert the provided CD into your disc drive and please click on **Run Autorun.exe** to execute the installer program.

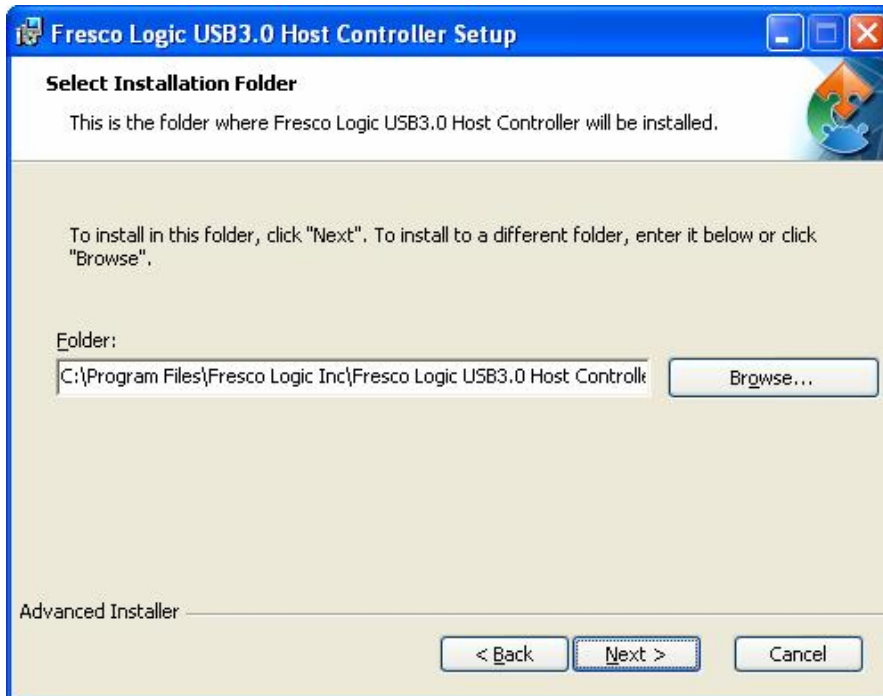


If the installer program doesn't run automatically, please locate and double-click on the **Autorun.exe** file in the CD to launch the install program.

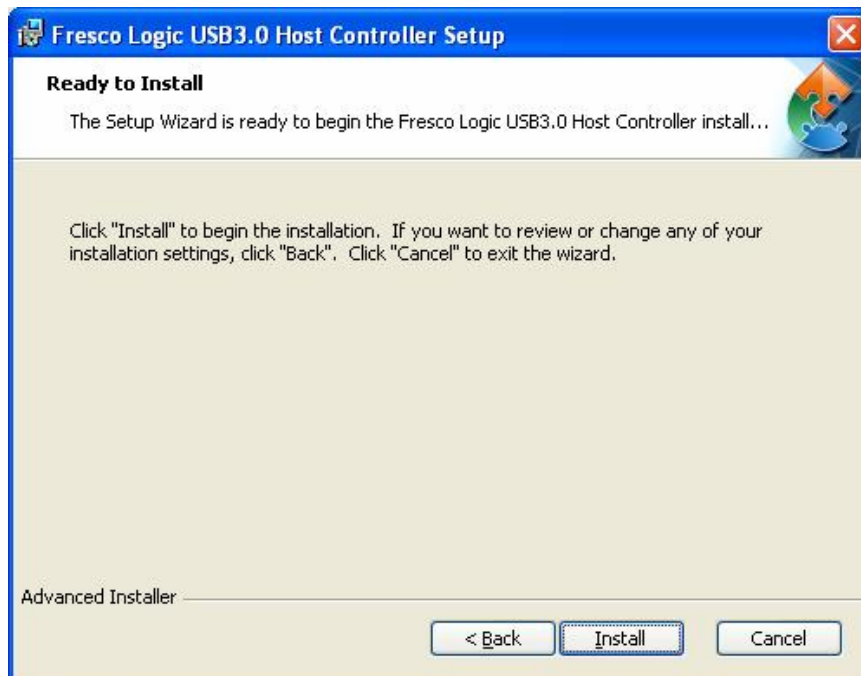
3. Please click "**Next**" to continue the Setup Wizard.



4. To install in this folder, click **"Next"**. To install to a different folder, enter it below or click **"Browse"**.



5. Click **"Install"** to begin the installation.



6. Click “**Finish**” button to exit the Setup Wizard.



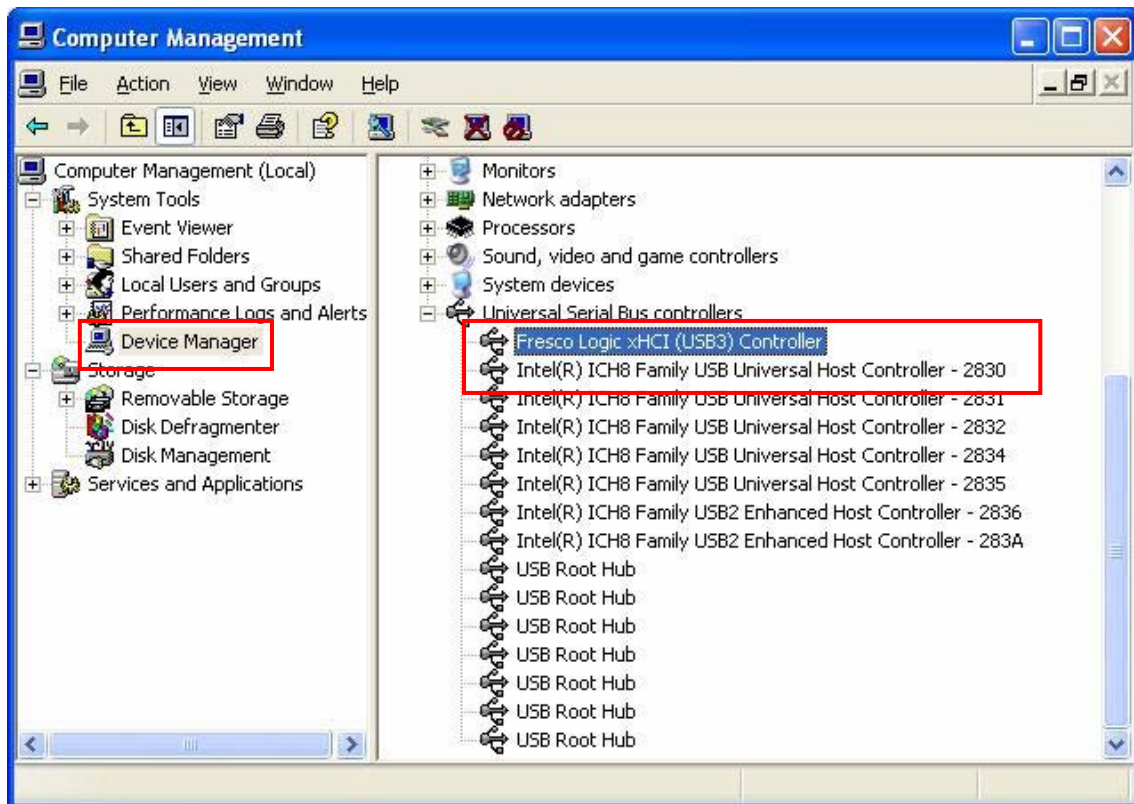
Note: You may need to restart your system for the configuration changes made to Fresco Logic USB 3.0 Host controller to take effect.

**Actual strings depend on your operation system. These screen shots are from Windows® XP and Windows Vista®, they might vary slightly for each operation system.*

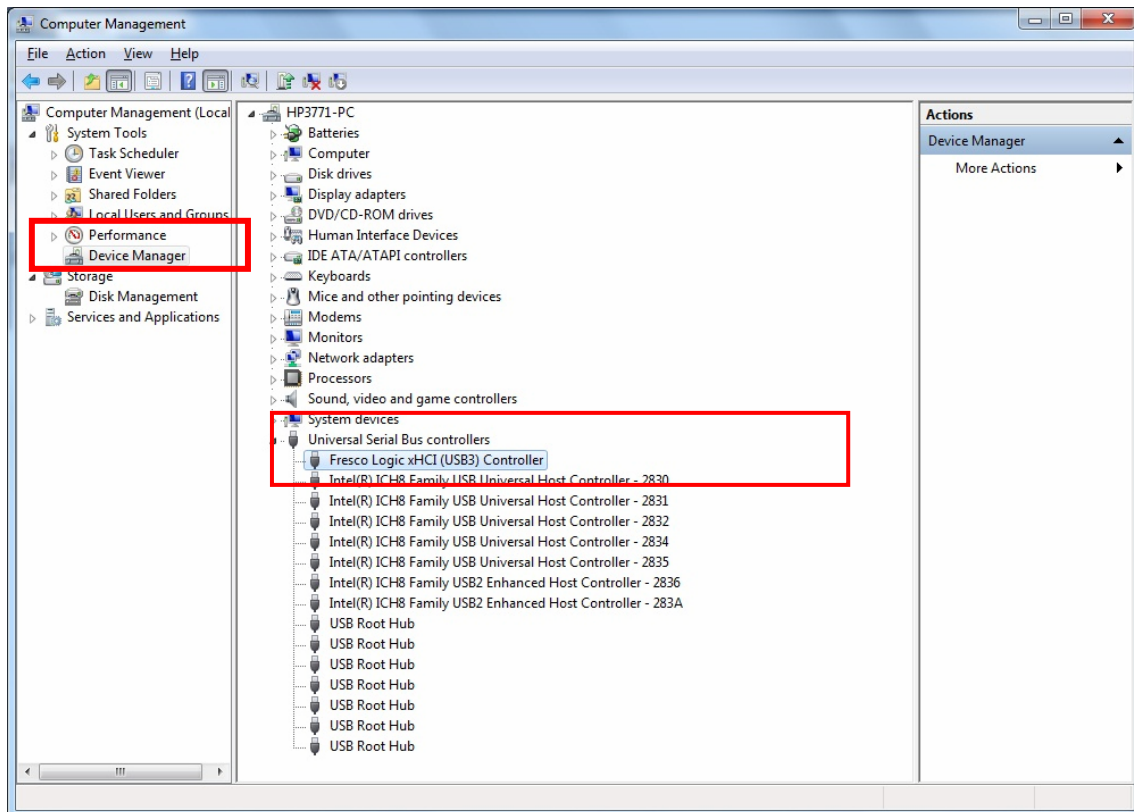
3. Installation Verification

After finishing installation, the system will detect the device. You can go to Device Manager to verify the entire installation.

Windows® XP



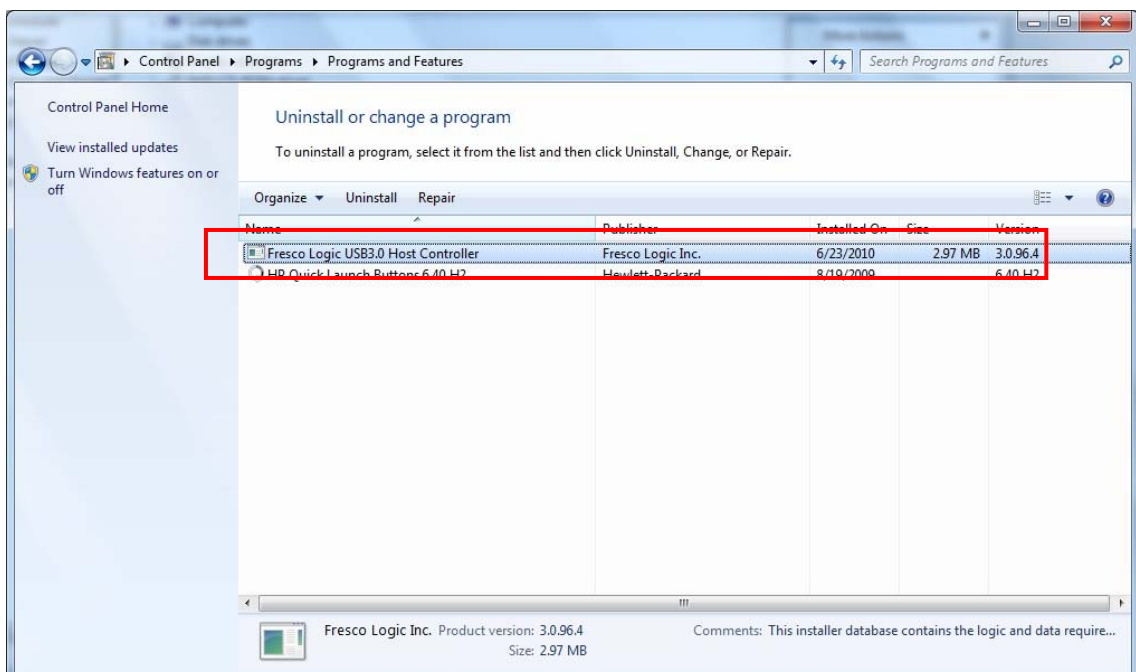
Windows Vista® / Windows® 7



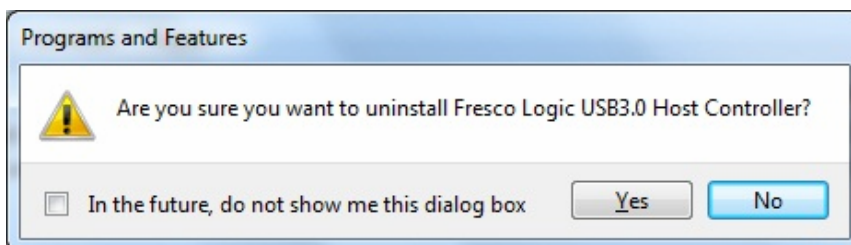
4. Uninstall the Driver

If for any reason you want to uninstall the video adapter and its driver, please take these steps:

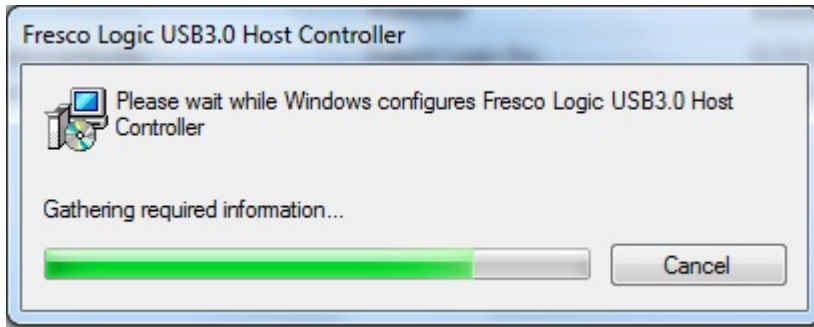
1. Open the **Control Panel** and double-click **Uninstall a Program** on Windows® 7, **Programs and Features** on Windows Vista®, and **Add or Remove Programs** on Windows® XP.
2. Select **Fresco Logic USB 3.0 Host Controller** and click **Uninstall** or **Remove**.



3. Click **“Yes”** to uninstall Fresco Logic USB 3.0



4. Please wait while Windows configures Fresco Logic USB 3.0 Host Controller.



**Actual strings depend on your operation system. These screen shots are from Windows® 7 and might vary slightly for each operation system.*

5. Specification

Interface	USB 3.0
Chip Set	Fresco, FL 1000
Connector	Host upstream link: PCI Express Slot
	Express Card downstream link: USB 3.0 A Type Female Connector On-Board Molex Power connector
Operation Temperature	10~40° C
Storage Temperature	-10~80° C
Power Requirement	Power Spec: 3.3V/1.2V
	Power Consumption: 181.5 mA
Cosmetic Describe	Housing: 72 * 61 * 18.5 MM(L X W X H)
	Weight : 41.5 g
	Color: Black
	Housing Material: Nickel Plating

6. Regulatory Compliance

FCC Conditions

This equipment has been tested and found to comply with Part 15 of the FCC Rules. Operation is subject to the following two conditions:

- (1) This device may not cause harmful interference
- (2) This device must accept any interference received. Including interference that may cause undesired operation.

Important! Changes or modifications not expressly approved by the manufacturer responsible for compliance could void the user's authority to operate the equipment. Use an approved phone set.

CE

This equipment is in compliance with the requirements of the following regulations: EN 55 022: CLASS B

WEEE Information

For EU (European Union) member users:

According to the WEEE (Waste electrical and electronic equipment) Directive, do not dispose of this product as household waste or commercial waste. Waste electrical and electronic equipment should be appropriately collected and recycled as required by practices established for your country. For information on recycling of this product, please contact your local authorities, your household waste disposal service or the shop where you purchased the product.

