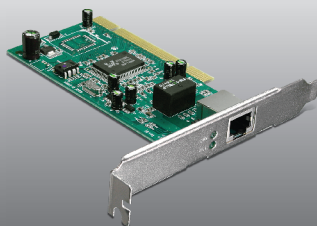


Anleitung zur Schnellinstallation 

TEG-PCITXR
TEG-PCITXRL
3.14

Table of Contents

Deutsch	1
1. Bevor Sie anfangen	1
2. Installation	2
<hr/>	
Troubleshooting	4



Packungsinhalt

- TEG-PCITXR/TEG-PCITXRL
- CD-ROM (Treiber)
- Mehrsprachige Installationsanleitung

Systemanforderungen

- 32-bit PCI 2.1 slot
- CD-ROM-Laufwerk
- Netzkabel

Unterstützte Betriebssysteme	Prozessor	Speicher
Windows 7 (32/64-bit)	1GHz oder schneller	1GB RAM oder mehr
Windows Vista (32/64-bit)	800MHz oder schneller	512MB RAM oder mehr
Windows XP (32/64-bit) / 2003 Server / 2000 / ME / 98SE	300MHz oder schneller	256MB RAM oder mehr

2. Installation

Hinweis:

1. Bei Windows 7, gehen Sie bis zu Schritt 7 weiter. Bei Windows Vista/XP/2000 fahren Sie mit Schritt 1 fort.
2. Verbinden Sie den TEG-PCITXR/TEG-PCITXRL erst dann mit Ihrem Computer, wenn Sie dazu aufgefordert werden.

1. Legen Sie die **Treiber-CD** in das CD-ROM-Laufwerk Ihres Computers.

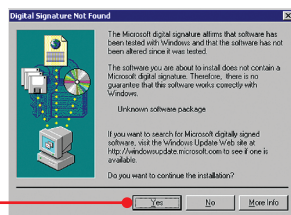
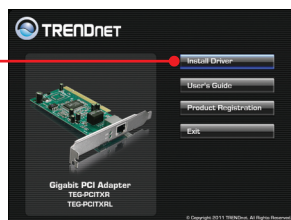
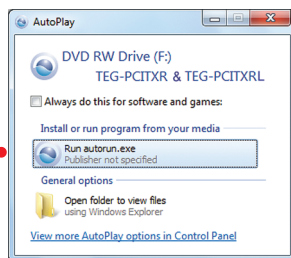
2. Klicken Sie auf **Run autorun.exe** (autorun.exe ausführen) (nur Windows Vista).

3. Klicken Sie auf **Install Driver** (Treiber installieren).

4. Folgen Sie den **Anweisungen des Installationsassistenten**.

5. Klicken Sie auf **Yes (Ja)**. (Windows 2000).

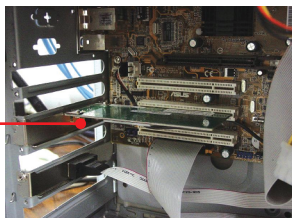
6. Klicken Sie auf **Finish** (Fertigstellen).



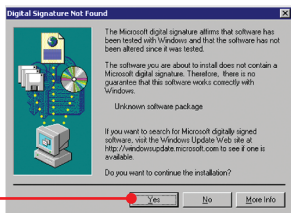
7. **Fahren Sie Ihren Computer herunter und öffnen Sie das Gehäuse.**



8. Stecken Sie die PCI-Karte fest in einen freien PCI-Karten-Steckplatz. Schalten Sie Ihren Computer wieder ein und warten Sie, bis der Windows-Desktop erscheint.



9. Die Treiber werden automatisch installiert.



10. Klicken Sie auf **Yes** (Ja). (Windows 2000)

11. Verbinden Sie ein Ende eines Netzkabels mit einem Netzwerk-Port Ihres Modems, Routers oder Umschalters. Stecken Sie das andere Kabelende in den Netzwerk-Port des TEG-PCITXR/TEG-PCITXRL.



Ihre Installation ist beendet!

1. I inserted the Driver CD-ROM into my computer's CD-ROM drive and the installation menu does not appear automatically. What should I do?

1. For Windows 7, if the installation menu does not appear automatically, click on the Windows Icon on the bottom left hand corner of the screen, click the **"Search programs and files"** box, and type **D:\autorun.exe**, where **"D"** in **"D:\autorun.exe"** is the letter assigned to your CD-ROM Drive, and then press the ENTER key on your keyboard.
2. For Windows Vista, if the installation menu does not appear automatically, click **Start**, click the **Start Search** box, and type **D:\autorun.exe** where **"D"** in **"D:\autorun.exe"** is the letter assigned to your CD-ROM Drive, and then press the ENTER key on your keyboard.
3. For Windows 2000/XP, if the installation menu does not appear automatically, click **Start**, click **Run**, and type **D:\autorun** where **"D"** in **"D:\autorun.exe"** is the letter assigned to your CD-ROM Drive, and then press the ENTER key on your keyboard.

2. Windows doesn't recognize my new hardware. What should I do?

1. Verify that your computer meets the system requirements as specified in **Section 1**.
2. Access your device manager to make sure the adapter is installed properly.
 1. To access the device manager on Windows 7, click on the Windows icon on the bottom left-hand corner, click **Computer**, click **System Properties** and then click **Device Manager**.
 2. To access the device manager on Windows Vista, right-click **Computer**, click **Properties** and then click **Device Manager**.
 3. To access the device manager on Windows XP, right-click **My Computer**, click **Properties**, click the **Hardware** tab, and then click **Device Manager**.

If you see a networking device with a yellow question mark or exclamation point:

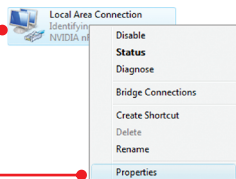
1. Uninstall the device from device manager
 2. Shutdown the computer.
 3. Remove the adapter from the computer
 4. Reinstall the adapter. See Section 2. **How to Install**.
3. If the device manager fails to recognize the presence of a new networking adapter, verify that the network adapter is firmly seated in the PCI slot.
 4. Plug the adapter into another PCI slot on your computer.

3. Windows recognizes my new hardware, but I'm unable to connect to my network. What should I do?

1. Verify that the RJ-45 Ethernet Cable is securely connected from your switch or router to your network adapter.
2. Verify that the LEDs on your network card are lit.
3. Verify that the TCP/IP settings are set to **Obtain an IP address automatically** (see the steps below).

Windows 7

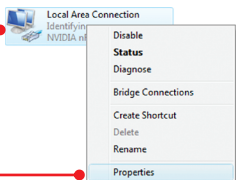
1. Go into the **Control Panel**, click **Network and Internet**, click **Network and Sharing Center**, click **Change Adapter Settings** and then right-click the **Local Area Connection** icon and then click **Properties**.



2. Click **Internet Protocol Version 4(TCP/IPv4)** and then click **Properties**. Then click on **Obtain an IP address automatically**.

Windows Vista

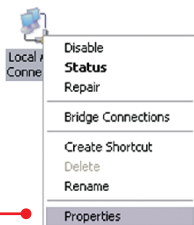
1. Go into the **Control Panel**, click **Network and Internet**, click **Network and Sharing Center**, click **Manage Network Connections** and then right-click the **Local Area Connection** icon and then click **Properties**.



2. Click **Internet Protocol Version 4(TCP/IPv4)** and then click **Properties**. Then click on **Obtain an IP address automatically**.

Windows XP/2000

1. Go into the **Control Panel**, double-click the **Network Connections** icon and then right-click the **Local Area Connection** icon and then click **Properties**.



☒ Obtain an IP address automatically

☐ Use the following IP address:

IP address:

Subnet mask:

Default gateway:

2. Click **Internet Protocol (TCP/IP)** and then click **Properties**. Then click on **Obtain an IP address automatically**.

4. How do I install the drivers on Windows 98 or ME?

Please refer to the Help folder on the Driver CD-ROM.

5. Why am I only getting a network connection speed of 100Mbps instead of 1000Mbps?

1. Check the Ethernet Cable. Make sure you are using CAT-5e or CAT-6 Ethernet Cables. Some CAT-5 cables are not rated to run in Gigabit.
2. Make sure you are connected to a 1000Mbps switch.

If you still encounter problems or have any questions regarding the **TEG-PCITXR/TEG-PCITXRL**, please refer to the User's Guide included on the Driver CD-ROM or contact Trendnet's Technical Support Department.

Certifications

This equipment has been tested and found to comply with FCC and CE Rules.

Operation is subject to the following two conditions:

- (1) This device may not cause harmful interference.
- (2) This device must accept any interference received. Including interference that may cause undesired operation.



Waste electrical and electronic products must not be disposed of with household waste. Please recycle where facilities exist. Check with you Local Authority or Retailer for recycling advice.



NOTE: THE MANUFACTURER IS NOT RESPONSIBLE FOR ANY RADIO OR TV INTERFERENCE CAUSED BY UNAUTHORIZED MODIFICATIONS TO THIS EQUIPMENT. SUCH MODIFICATIONS COULD VOID THE USER'S AUTHORITY TO OPERATE THE EQUIPMENT.

ADVERTENCIA

En todos nuestros equipos se mencionan claramente las características del adaptador de alimentación necesario para su funcionamiento. El uso de un adaptador distinto al mencionado puede producir daños físicos y/o daños al equipo conectado. El adaptador de alimentación debe operar con voltaje y frecuencia de la energía eléctrica domiciliar existente en el país o zona de instalación.



Product Warranty Registration

Please take a moment to register your product online.
Go to TRENDnet's website at <http://www.trendnet.com/register>