

TerraTec Driver Installation Under Windows 7

Please note:

The screenshots might vary depending on your Windows Settings, appearance option.
Be certain your TerraTec device is connected to the PC for the installation. Also check the system requirements on the product box or in the user's manual.

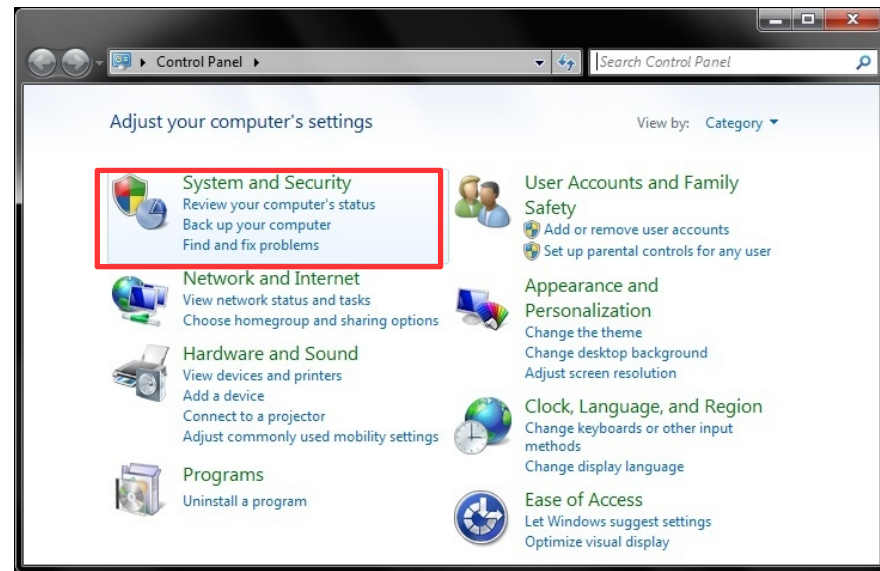
It is necessary that you perform the installation with the latest Windows 7 drivers available on our website
<http://www.terratec.com>.

All registered trademarks, product designations or brand names used in this document are the registered property of their respective owners.
TerraTec Electronic GmbH, 1994 - 2009.

TerraTec Driver installation under Windows 7

Open the Device Manager:

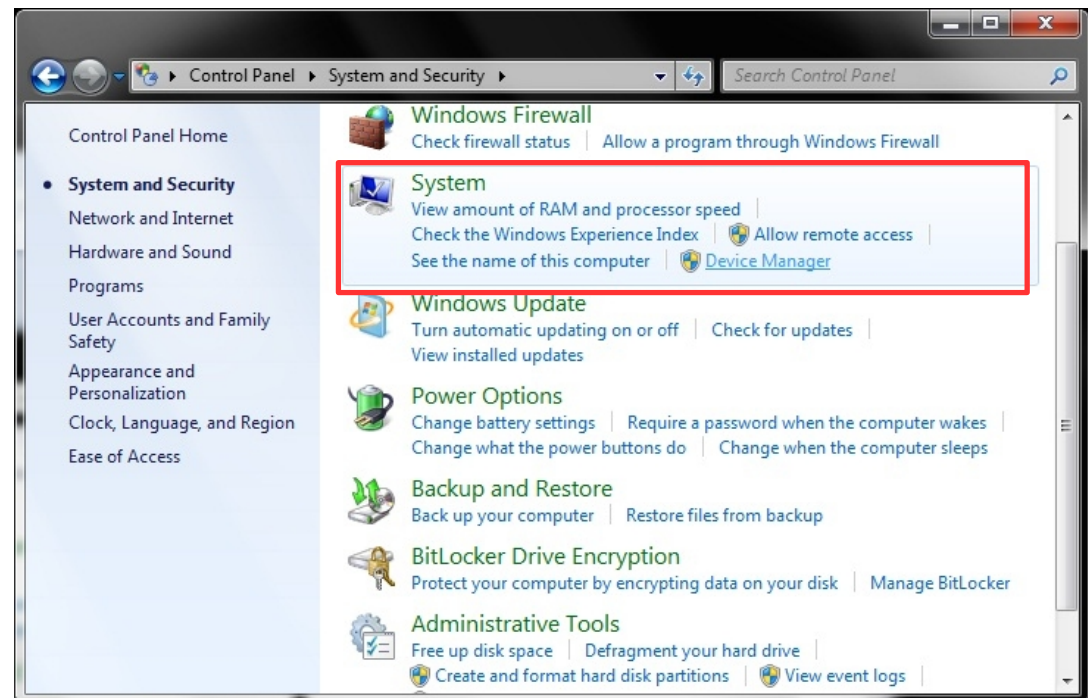
To open the Device Manager, go to Start, Settings, Control Panel, and select „System and Security“.



In the next window, please click on „Device Manager“ under System.

If Windows asks your permission to continue, select „Continue“ to procede!

Alternativ: press keys WIN + Pause to open the Device Manager.

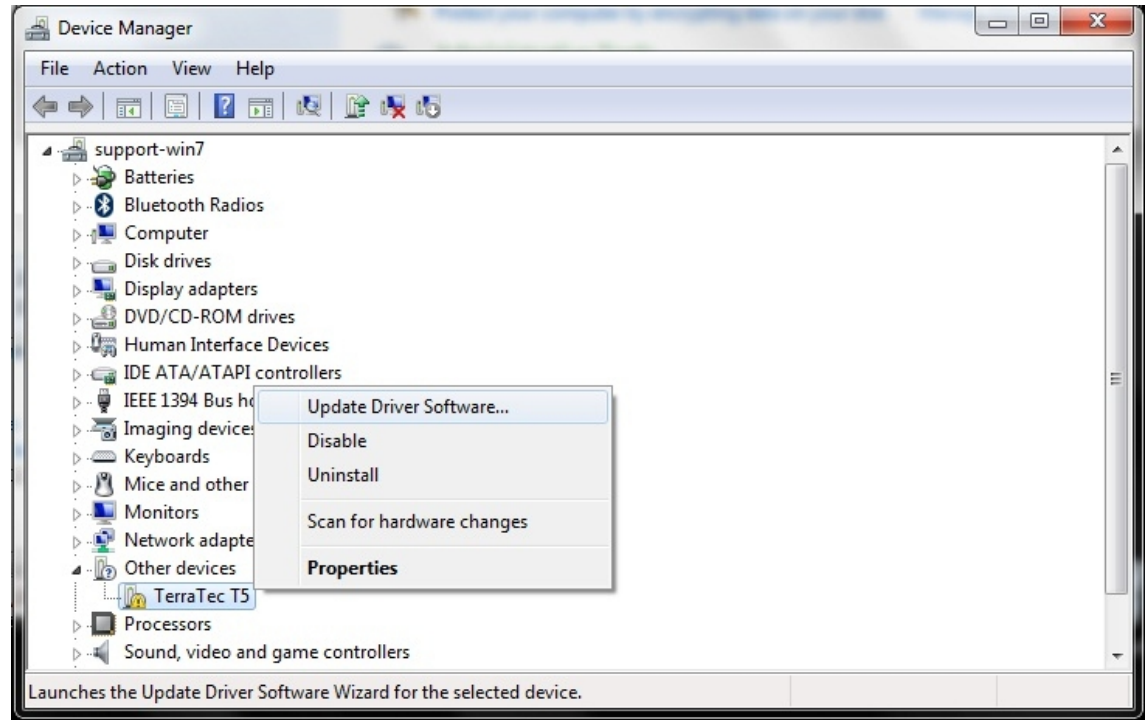


TerraTec Driver installation under Windows 7

The Device Manager is opened:

N.B.: Your TerraTec product must previously be connected to the PC. USB based TV Cards might not work if you are using an external USB hub. If your TerraTec product is not recognized, you can simply try to connect it to a different USB port. For PCI based products, shut down your PC if you change PCI ports.

Make a right mouse click to select „Update Drivers Software“ or open the properties of the TerraTec device which needs (new) drivers. Go to the tab „Drivers“ and click „Update Driver...“



TerraTec devices can generally be found under:

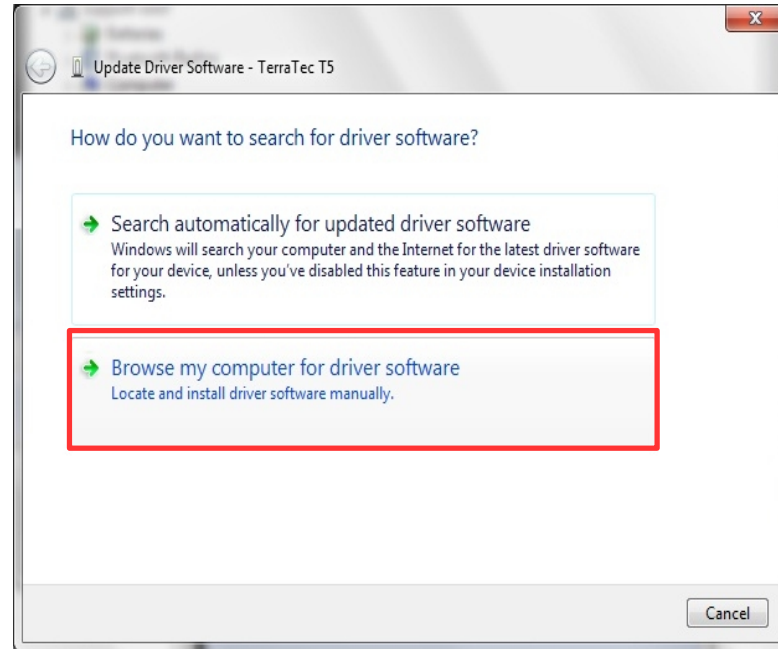
- Other Devices (Multimedia Controller)
- Sound, Video and Game Controller
- Digital Video

Any exclamation or question mark means that no drivers are installed for the device.

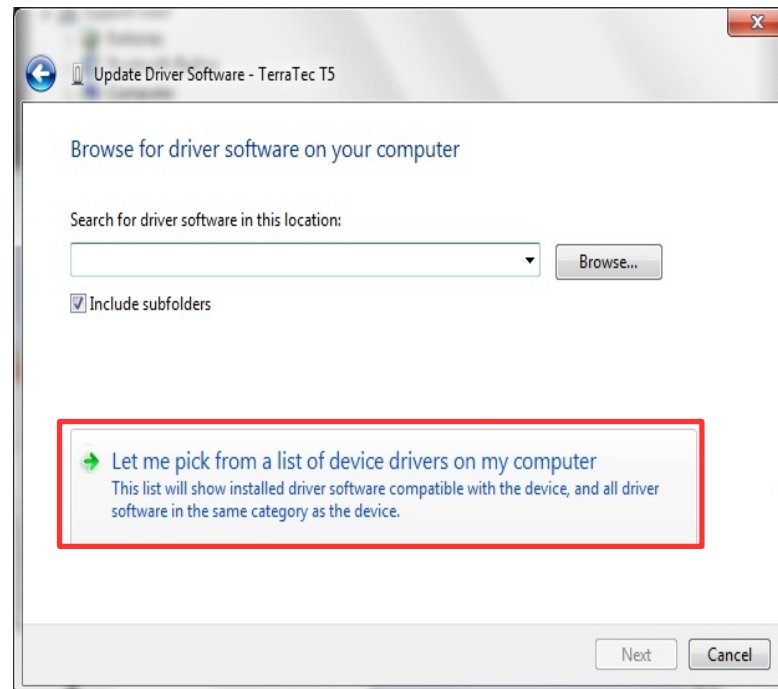
TerraTec Driver installation under Windows 7

Update Driver Software:

Select the option at the bottom of the window „Browse my computer for driver software“.



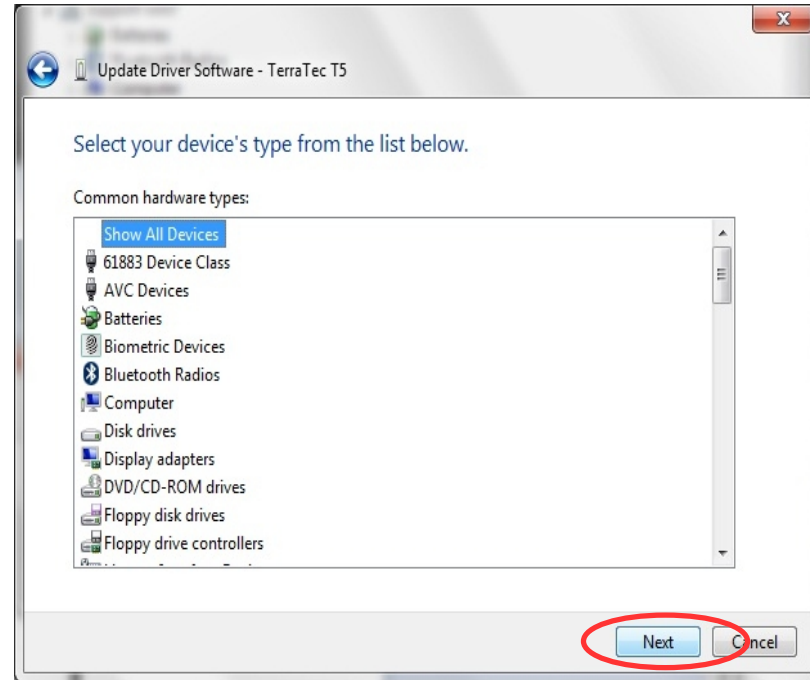
Select „Let me pick from a list of device drivers on my computer“



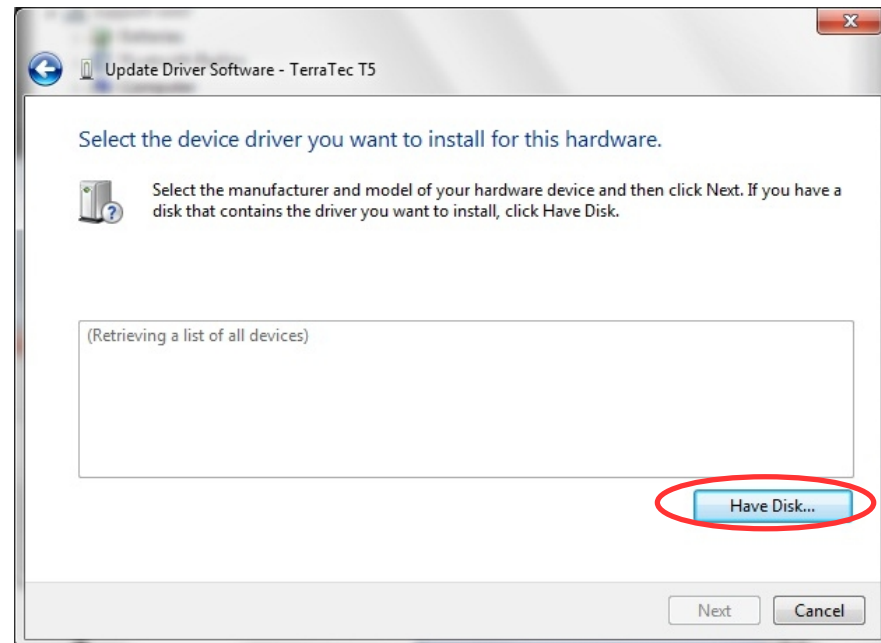
TerraTec Driver installation under Windows 7

Update Driver Software:

Click on Next > until the window „Select the device driver you want to install for this hardware“ appears. .



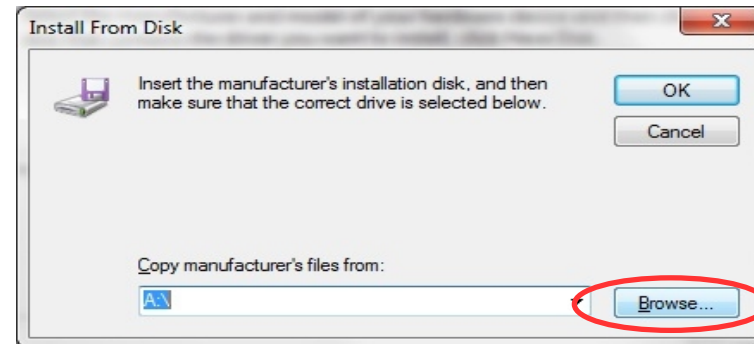
To select a driver click on Have Disk...



Part 1: TerraTec Driver installation under Windows 7

Install From Disk:

Click on Browse.

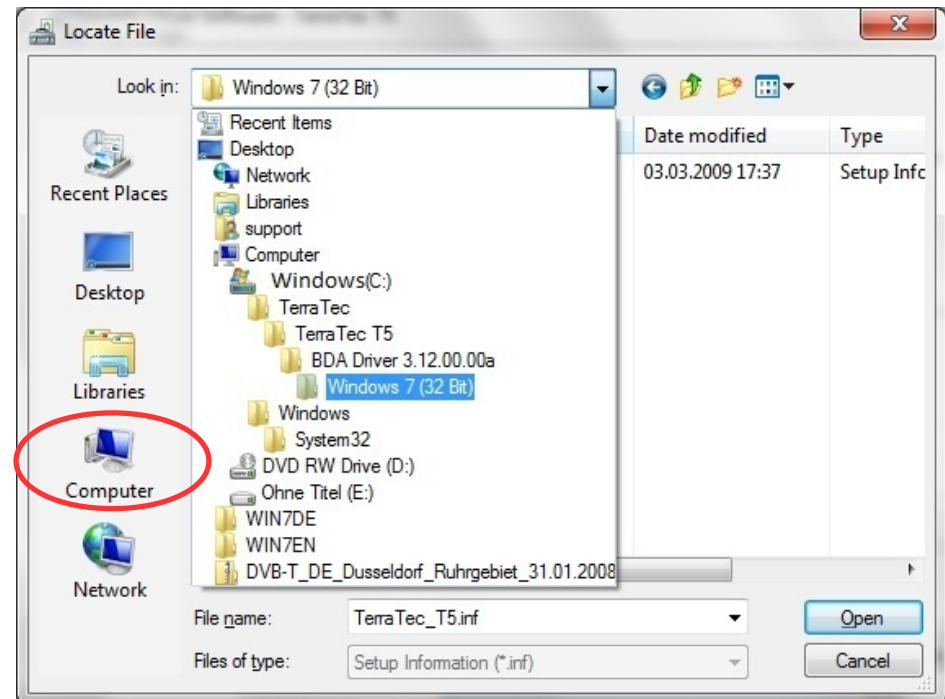


Locate File:

Click on "Computer" to browse to the Disk C:\ where the TerraTec folder is located. There you will find the previously unpacked drivers for your product.

If you have already tried to install the drivers with the Setup file without success, you will also find the drivers under:

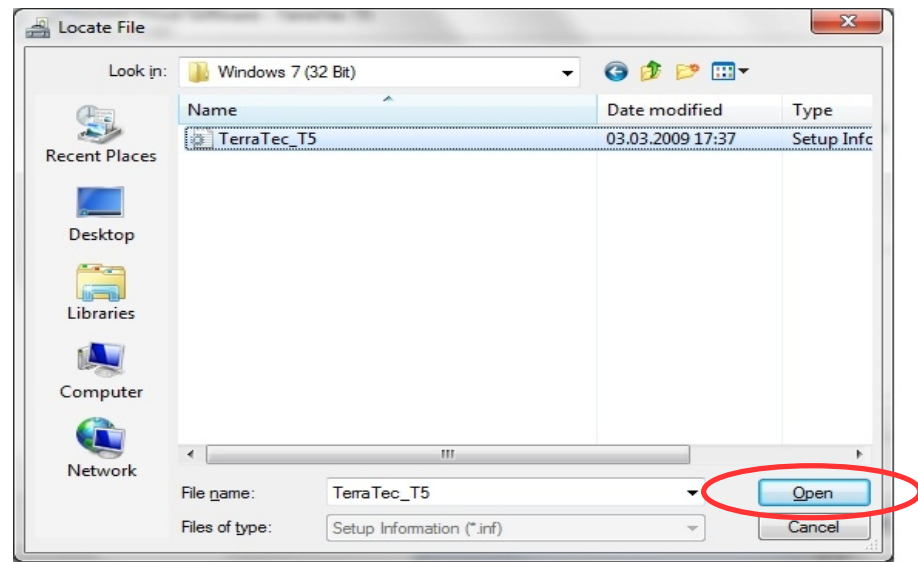
C:\Program Files\Common
Files\TerraTec\DriverInstall\TerraTec...



TerraTec Driver installation under Windows 7

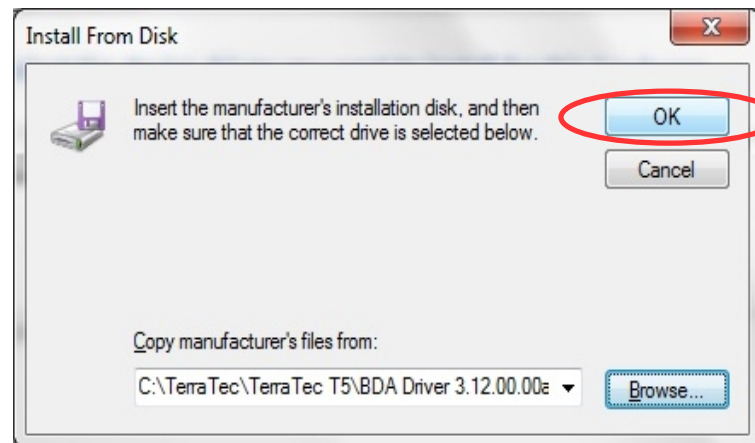
Locate File

Select the appropriate folder and click on the *.inf file corresponding to your TerraTec product.
Confirm your choice with „Open“



Install From Disk:

Confirm your choice with OK.



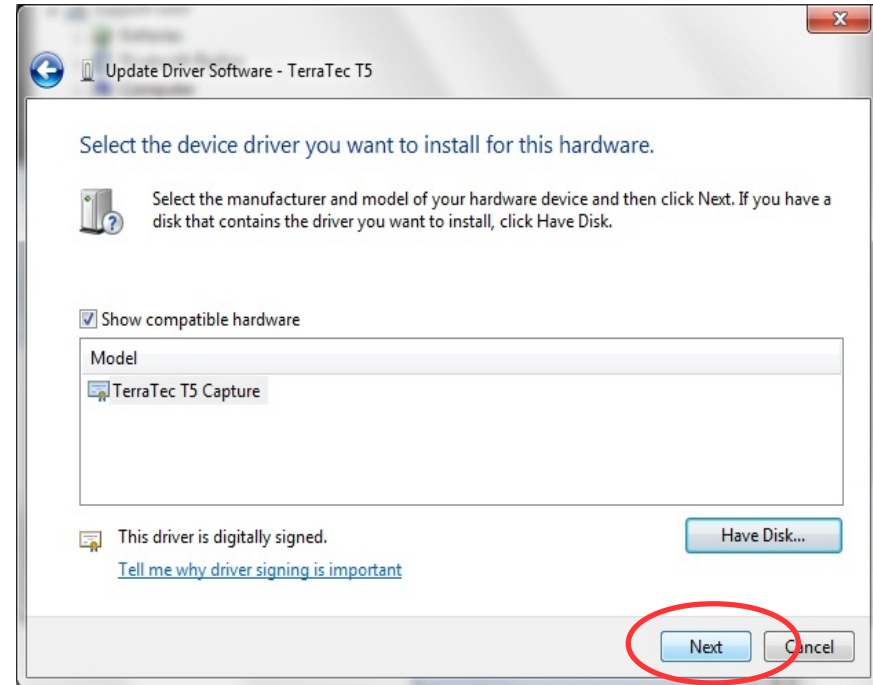
TerraTec Driver installation under Windows 7

Update Driver Software:

If several compatible Models are available, you will have to select the device you wish to install in the „Model“ window

After selecting the correct device, press Next to allow Windows to copy the files in the system.

You can disregard the safety warning without concern. Click Install or Continue Anyway to continue.



Update Driver Software:

The drivers are now installed. Press „Close“ to exit the Wizard. Your TerraTec device is ready to use.

N.B.: In some cases a system restart is necessary. Please follow any instruction displayed on your screen to complete the installation.

