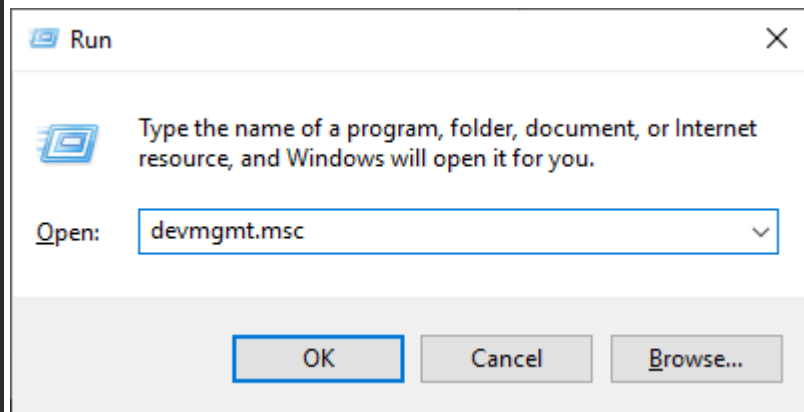
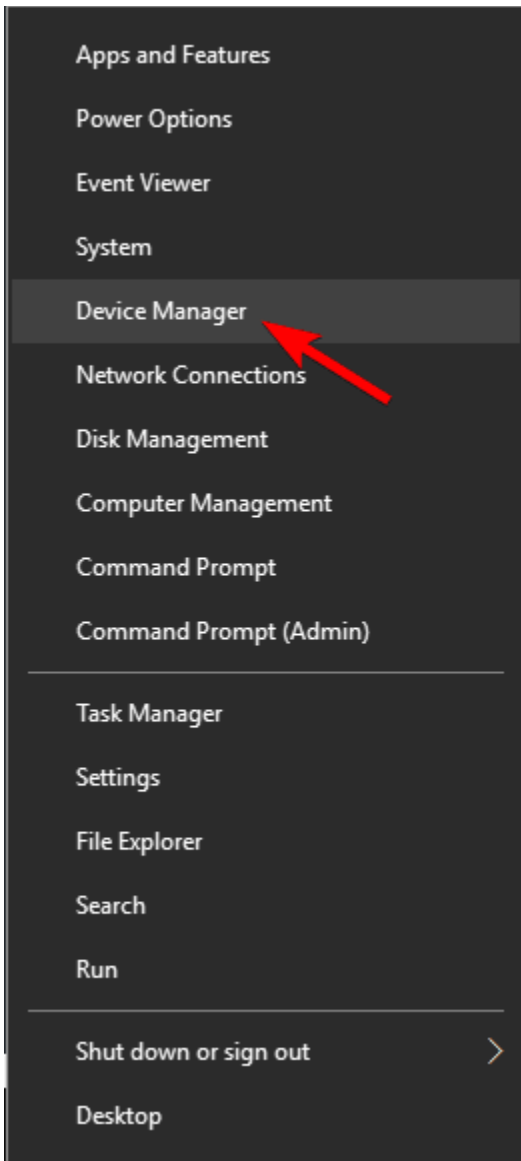


1. Extract the driver files from the downloaded .zip file.

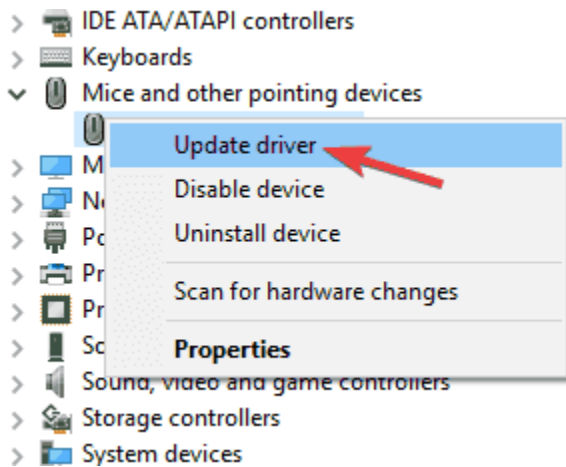
2. Open Device Manager in Windows.

Press Windows Key + X to open menu and select **Device Manger** from the list.

or Press Windows Key + R and in box key in the shortcut command - **devmgmt.msc** and click OK.



3. In the Device Manager window, locate the device to update or install the driver. Right-click the device and choose **Update Driver**.



4. Select the **Browse my computer for driver software** option. This option will allow you to install the drivers manually.

How do you want to search for drivers?

→ Search automatically for updated driver software

Windows will search your computer and the Internet for the latest driver software for your device, unless you've disabled this feature in your device installation settings.

→ Browse my computer for driver software

Locate and install driver software manually.

5. Choose **Let me pick from a list of device drivers on my computer** option.

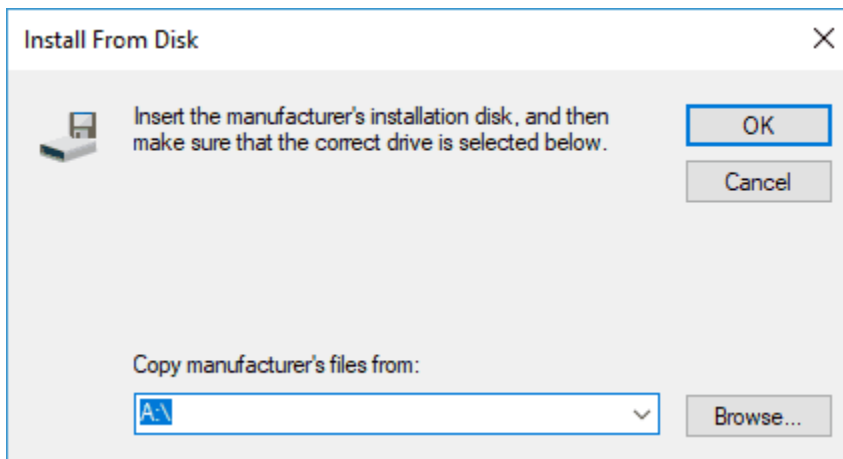
→ Let me pick from a list of available drivers on my computer

This list will show available drivers compatible with the device, and all drivers in the same category as the device.

6. Click the **Have Disk** button.



7. At the Install from Disk window, click the **Browse** button and locate the driver files on your hard drive where you extracted the .zip file.



8. After you select the driver file (**TN40xxmp\_.inf**), click the **OK** button. Windows will install or update the network card driver.

Name	Date modified	Type	Size
TN40xxmp.cat	11/5/2018 5:11 PM	Security Catalog	12 KB
TN40xxmp_.inf	11/4/2018 6:58 PM	Setup Information	40 KB
TN40xxmp_32.sys	11/5/2018 5:11 PM	System file	1,057 KB
TN40xxmp_64.sys	11/5/2018 5:11 PM	System file	1,068 KB